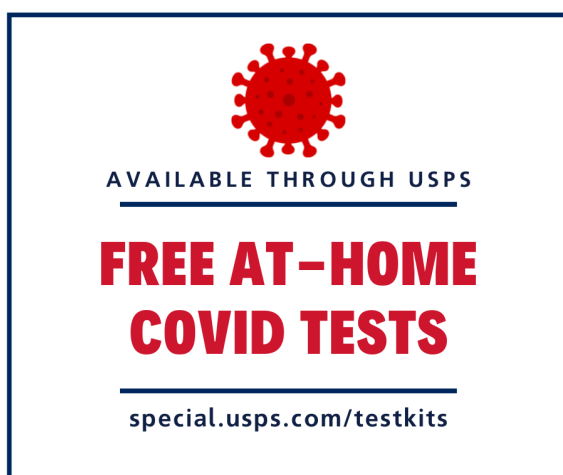




Free At-Home COVID-19 Tests Available Through U.S. Postal Service



Free at-home COVID-19 rapid tests are available for order and shipment through the United States Postal Service (USPS). Each order will contain four tests. There is a limit of one order per residential address. To order, please go to <https://special.usps.com/testkits>.

NEB Names Reps for Key Safety & Tech Positions

The National Executive Board last month appointed these members to key safety and technology positions:

- Katie Peltz (Minneapolis Center, ZMP), Central Service Area En Route Event Review Committee Representative.
- Will Hutson (Denver ATCT, DEN), Article 114 Representative for Unmanned Aircraft System Traffic Management (UTM) / Urban Air Mobility (UAM).
- Steve Spinks (Southern California TRACON, SCT), Time Based Flow Management (TBFM) Ops Team Terminal Subject Matter Expert (SME).
- Sherri O'Neil (Seattle Center, ZSE), TBFM Ops Team En Route SME.



NATCA Charitable Supports Locals' Holiday Donations

The NATCA Charitable Foundation (NCF) supported more than 30 holiday programs across the country. NATCA members at facilities in 19 states as well as our Retired NATCA Active Volunteers (RNAV) members and NATCA National Office staff and their families led the contributions to holiday charity programs.

“Thank you for the facilities and volunteers that gathered, shopped, and delivered donations in their local communities and made a difference in the lives of others,” said NCF President Corrie Conrad (Portland, Ore., ATCT, PDX).

NCF donated more than \$40,000 to support volunteers in purchasing toys, coats, gloves, hats, and basic items for children and families in need.



PHOTO COLLAGE (clockwise, starting upper right): Miranda Blackwelder (Sarasota ATCT, SRQ), Seattle ATCT (SEA) NCF-supported donations for Amara, Honolulu Control Facility (HCF) NCF-supported donations for Kapiolani Health Foundation and Children’s Hospital, and Monroe ATCT (MLU) NCF-supported holiday donations.

Partnership for Safety Update: A Checklist Each Local Safety Council Must Complete

THREE
FOR
THREE



DOES YOUR LSC HAVE A SCOPING DOCUMENT?

- Every facility must have one.



DOES YOUR LSC MEET MONTHLY?

- They must meet once a month or more.



DOES YOUR LSC PERFORM FACE-TO-FACE SAFE DISCUSSIONS?

- Time must be provided for LSC to conduct SAFE discussions.



NATCA's collaboration with the Federal Aviation Administration in the Partnership for Safety (PFS) program facilitates the identification and mitigation of hazards at the local level through support of collaborative Local Safety

Councils (LSCs). These councils share trending ATO Safety information, develop local lessons-learned, and encourage facilities to mitigate hazards at their facilities.

“To be successful, every member has to be a safety champion,” said National Safety Committee (NSC) member and Great Lakes Regional Safety Representative Michelle Trudeau (Indianapolis Center, ZID). “One member’s knowledge on the LSC could drastically and beneficially change safety at their facility forever, and those changes could be one member’s lasting legacy at their facility.”

This graphic outlines the three-step checklist that each LSC must complete.

Find more information on the PFS program from [the NSC's PFS webpage](#).

Finance Committee Update

The National Finance Committee (NFC) wants you to know the 2021 tax season is here:

- LM forms need to be filed with the Department of Labor (DOL) by March 31.
- IRS 990 e-postcard or EZ forms need to be filed with the IRS by May 16.



The NFC is offering six virtual classes ([learn more, including registration instructions](#)) to help FacReps and treasurers

navigate both forms. These are live classes, with two members of the NFC available to assist with questions or issues.

- Feb. 11 - 1 p.m. EST
- Feb. 25 - 1 p.m. EST
- March 4 - 1 p.m. EST
- March 11 - 1 p.m. EST
- March 15 - 2 p.m. EDT

There are helpful instructions on the [members side of the NATCA website](#)

The NFC is also offering an on-boarding call for new FacReps and treasurers. This is also a great refresher for those that may have been in their position for a while. These calls will be the following dates and times:

- Jan. 27 - 3 p.m. EST
- Feb. 9 - 5 p.m. EST
- March 9 - 3 p.m. EST

The invitation for these calls will be via email from your regional vice president.

Election Support Committee Update

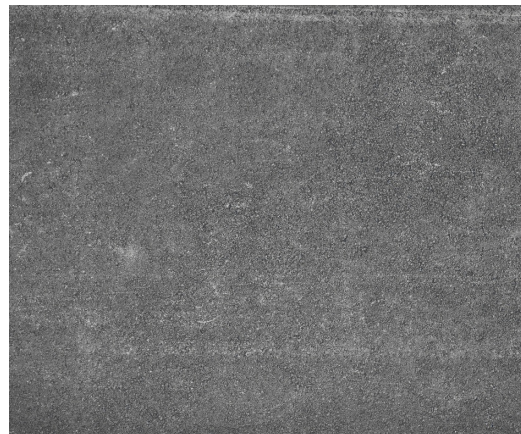


With many facility-level elections ongoing, the National Election Support Committee (ESC) would like to remind members that it is available to assist facilities throughout the process. Assistance can be anything from looking over timelines, reviewing Notices of Elections, or even training on how to run elections. There is an ESC member in each region and their contact information can be found on the [ESC](#)

[webpage](#). Additional questions or concerns can be sent to ESC@list.natca.net.

Member Benefit Spotlight: GEICO

GEICO is the second-largest private passenger auto insurer in the United States, providing auto insurance coverage for over 15 million policyholders and insuring more than 22 million vehicles. NATCA has partnered with GEICO to provide a special discount of up to 8% for qualifying members. Existing GEICO customers may also be eligible for this discount.



You may request a free, no-obligation quote by:

- Telephone – Call 1-800-368-2734. Reference “National Air Traffic Controllers Association” when requesting a quote.
- Online – [Click here](#).

Each time you request a quote, GEICO makes a contribution to NATCA.

NOTE: Discount not available in Michigan, Mississippi, and Tennessee.

[Visit the benefits section of the NATCA website](#) for more information about GEICO and all the other great benefits members are eligible to receive.

[Visit our Website](#)



NATCA | 1325 Massachusetts Ave NW, Washington, DC 20005

[Unsubscribe tmetzger@natcadc.org](mailto:tmetzger@natcadc.org)

[Update Profile](#) | [Constant Contact Data Notice](#)

Sent by natcanationaloffice@natca.net