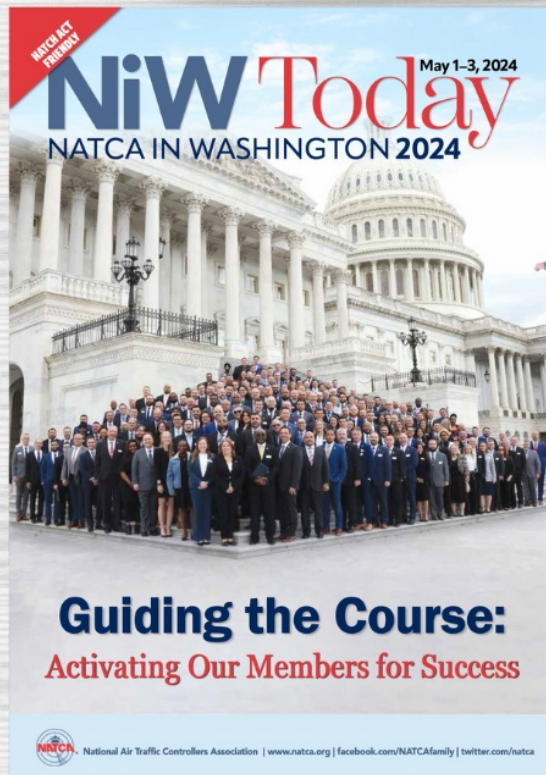




NATCA in Washington 2024 Begins This Week

Nearly 400 NATCA activists are set to travel to Washington, D.C., for NATCA in Washington (NiW) 2024! We have contacted all 535 congressional offices to secure meetings where our NATCAvists will champion our Union's cause. Each activist will be equipped with the essential 2024 edition of the NiW Today — a powerhouse briefing booklet packed with advocacy topics, legislative guides, meeting tips, and more. Plus, every NATCA local will receive two copies of this vital guide, serving as a year-round legislative toolkit for all members. Fully Hatch Act compliant, it's perfect for reading and sharing by all members of our Union.

You can view a PDF of the book [here](#).



National Executive Board Meets Tomorrow in Washington, DC

NATCA's National Executive Board (NEB) is meeting tomorrow, April 30, in Washington, D.C. ahead of NATCA in Washington. NATCA's President, Executive Vice President, and Regional Vice Presidents constitute the NEB. The NEB is responsible for the creation of policy for our Union between our conventions.

National Executive Board Meeting

Washington, D.C. | April 30



Find minutes from the NEB's recent meetings [here](#).

Child Care Subsidy: Supporting Families and Careers in Aviation

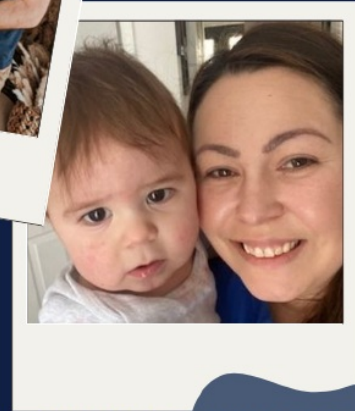
During April, the Month of the Aviation & Aerospace Child, NATCA's National Child Care Representative Christina Munro Wilcko (Southern California TRACON, SCT) is spotlighting the FAA's Child Care Subsidy Program, which significantly aids eligible employees in managing child care costs. The program is highlighted for its critical role in supporting employees by providing subsidies for child care services, to include in-home nanny and au pair care to accommodate parents with non-traditional work schedules. This initiative is geared towards permanent, full-time employees with a household income of \$100,000 or less and children aged 13 or younger, or disabled children under 18.

The FAA will pay for a percentage of child care costs based on total family income under \$100,000 annually: 70 percent for \$70,000 or less, 45 percent for \$70,001 to \$85,000, and 30 percent for \$85,001 to \$100,000.

CHILD CARE SUBSIDY

Supporting families and careers in aviation during April, the Month of the Aviation and Aerospace Child, and year round.

Learn more at the child care subsidy page from an FAA computer.



CHRISTINA AHUMADA,
ST. LOUIS DOWNTOWN ATCT (CPS)

One subsidy beneficiary, Christina Ahumada, a certified professional controller at St. Louis Downtown ATCT (CPS), relies on this program to balance her demanding career and her role as a mother of two young children. With the support of the subsidy, Christina can navigate her shift work with ease, allowing her to enjoy personal pursuits like reading, photography, and hiking.

Wilcko, NATCA's Child Care Representative, works with the FAA to foster a supportive work environment, enhancing work-life balance, and alleviating the financial burden of child care for employees. NATCA members are encouraged to explore and utilize this beneficial program to ease their child care challenges and enhance their family lives.

Learn more about the program by accessing [this link](#) from an FAA computer.

[Visit our Website](#)



NATCA | 1325 Massachusetts Ave NW, Washington, MD 20005

[Unsubscribe tmetzger@natca.org](mailto:tmetzger@natca.org)

[Update Profile](#) | [Constant Contact Data Notice](#)

Sent by natcanationaloffice@natca.net

